

Zucchero 1517
Pant. 11-4800



Aglione 1595
Pant. 11-0701



Grano 1504
Pant. 14-1113



Ecrù 1504
Pant. 13-6105



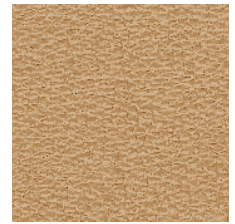
Sahara 1526
Pant. 16-1326



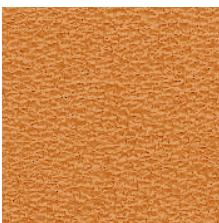
Mimetico 1503
Pant.17-0517



Tronco 1519
Pant. 19-0820



Crema 1510
Pant. 14-1038



Arancio 1515
Pant. 15-1050



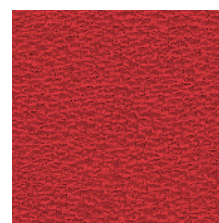
Wengé 1575
Pant.19-1118



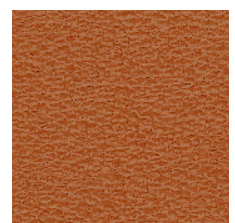
Carruba 1575
Pant. 19-1118



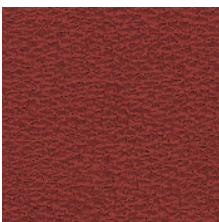
Fondente 1547
Pant.19-0912



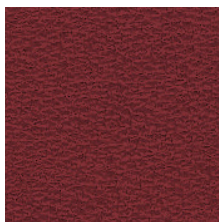
Vermiglio 1529
Pant. 18-1762



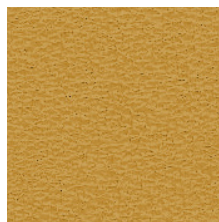
Safari 1516
Pant. 16-1346



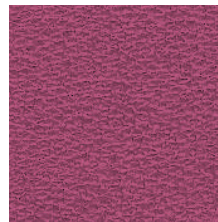
Sangria 1531
Pant. 19-1532



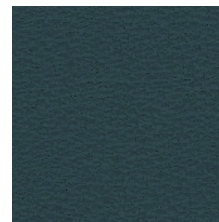
Borgogna 1532
Pant. 19-1627



Natura 1552
Pant. 16-0742



Bouganville 1535
Pant.18-2527



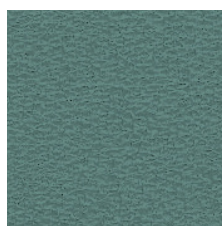
Oltremare 1507
Pant. 19-4014



Polvere 1508
Pant. 16-5804



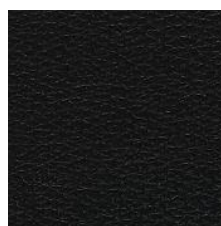
Polvere 1508
Pant. 16-5804



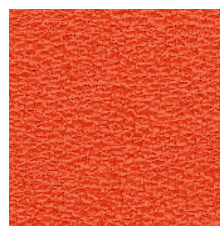
Cadetto 1541
Pant. 18-4217



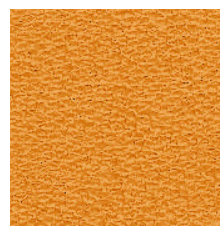
Avana 1508
Pant. 17-1310



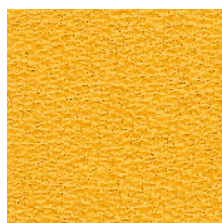
Nero 1501
Pant. 19-0000



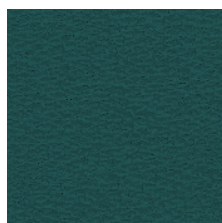
Tangerino 1522
Pant. 18-1454



Senape 1514
Pant. 16-0952



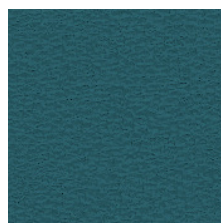
Limone 1557
Pant. 14-0755



Prussia 1543
Pant.19-4726



Foglia 1553
Pant. 19-4726



Pegeo 1542
Pant. 19-4241



Ippopotamo 1520
Pant. 18-0306

Tipo di pellame/
Hyde type

Bovino Europeo/
European bovine

Concia/
Tanning

Al cromo/
Chrome

Tintura /
Dyeing

Passante/
Penetrating

Rifinitore/
Finishing

Poliuretano/
Polyurethane

Superficie/
Surface

Fiore corretto/
Corrected grain

Spessore/
Thickness

0,9-1,1 mm

Taglia media/
Average size

≥5,0 mq

Per quanto riguarda la manutenzione Vi informiamo che la nostra pelle è facilmente pulibile con acqua e sapone neutro. Vi rammentiamo che la pelle nei colori chiari è più sensibile allo sporco e richiede una regolare ed attenta pulizia, per evitare che lo sporco venga assorbito e non possa più essere rimosso.

As regards care instructions we inform you our Leather is easily washable with water and neutral soap. We remind you leather in clear colors is more sensitive to dirt and demands a regular and attentive cleaning to avoid dirt to be absorbed and no longer removed.

Caratteristiche tecniche/ Technical datasheet

Test

Norma/ Method

Valori/ Result

Scala/ Grade

Sfregamento a secco/
Dry friction

ISO 11640

≥1.000

Cicli/ Cycles

Sfregamento a umido/
Damp friction

ISO 11640

≥250

Cicli/ Cycles

Resistenza al fuoco/
Fire resistance

ISO 1021/1-2

**Nessuna combustione/
No ignition**

Ancoraggio rifinitore/
Finish locking

ISO 11644

≥3,0

N/cm2

Fatica a flessione/
Crocking fatigue

ISO 5402

≥50.000

Cicli/ Cycles

Solidità alla luce/
Solidity in light

ISO 105-B02

>4

Blu / Blue

Invecchiamento da calore/
Heat ageing

ISO 17228

≥4

Grigi / Gray

Leather è una pelle con fiore corretto realizzata su bovini di origine europea. La cartella colori è estremamente ampia e propositiva e combinata con la grana leggera ne esalta al massimo le possibilità di utilizzo. La tintura è passante con colori toni su tono. La superficie media della pelle Aliseo è di circa 5,0 m2, lo spessore è di 0,9-1,1 mm.

Leather is a corrected grain one realized with European bovine. A wide range and propositional color folder combined with a soft grain exalt the possibility of application Penetrating dyeing with tone on tone colors. Average surface of Aliseo Leather is about 5,0 M2, thickness is 0,9-1,1 mm.