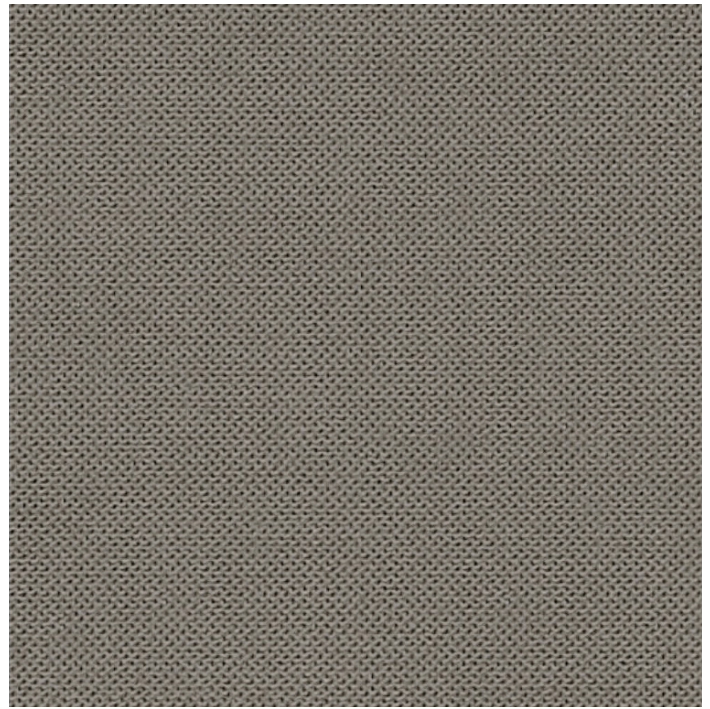


# C. Smile

Noctis®

Composizione/ Composition	<b>100% PL</b>
Altezza/ Width	<b>145 cm</b>
Peso/ Weight	(± 5%) <b>190 g/m<sup>2</sup></b>
Resistenza alla luce/ Colour fastness to light	Scuri/ Dark <b>5</b>
Martindale	<b>&gt;45.000</b>
Resistenza del colore al lavaggio/ Colour fastness to washing	-
Ignifugo/ Fireproof	<b>no</b>
Idrorepellente/ Waterproof	<b>no</b>
Antimacchia/ Stain resistant	<b>no</b>



**Smile 8061**  
Pant. 17-0517

